

# *shades* OF BLUE

*Ocean hues and bold  
geometric patterns add  
wow factor to this serene  
California bath.*

WRITER *Jennifer Blaise Kramer*  
PHOTOS AND STYLIST *Matt Wier*







Colorful encaustic cement tiles on the floor and walls reflect homeowner Amy Meyer's desire for a modern Mediterranean look in her new master bath. Removing partition walls and a bulky tub deck gave the bath more breathing room without adding square footage.





ABOVE: One long countertop along this wall could have been overpowering, so designer Jessica Risko Smith broke it up visually by adding a stepped-down makeup vanity and using wood tones rather than white. OPPOSITE: Artwork-looking tillandsia—plants that are practically invincible and get enough water just from the shower's steam to thrive—dot a wall.

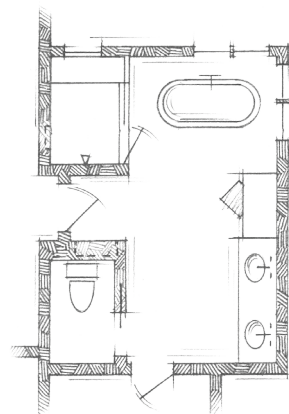




**THIS BATH WAS DESIGNED** with an eye to the Pacific Ocean—both literally, as the top floors of the Santa Barbara home enjoy glimpses of the sea, and figuratively, as homeowner Amy Meyer wanted a happy, bright, peaceful spot to remind her of Hawaii. “We were looking for a more modern Mediterranean style with a neutral background and a pop of aqua, which reminds me of the Maui ocean—one of my favorite places,” Amy says. To carry the threads of blue through her whole home during an extensive remodel, she hired interior designer Jessica Risko Smith of JRSID, who brought subtle seaside currents to each corner.

Previously this bathroom was a jumble of angles and curves that didn’t make smart use of the space or take advantage of the view. Smith gutted the 200-square-foot room and created focal points high and low. A new soaking tub is positioned for prime water and canyon views, while a dramatic wall of encaustic cement tile greets anyone entering the bath with a wave of deep indigo. Smith selected the wall tile in conjunction with the floor tile—which pulls in the bright aqua Amy wanted. To keep the patterns big and beautiful yet clean and contained, a 6-inch marble apron front runs the length of the custom vanity, creating

### *the plan*



Removing partition walls opened up the bath to sunlight and views. A new freestanding tub occupies the same spot as the original built-in version but takes up considerably less space. The custom dual vanity includes a makeup station at one end.



THIS PHOTO: A contemporary glass shower door is a major upgrade from the former drywall partition, which made the shower feel dark and cramped. OPPOSITE: To distinguish the makeup vanity, Smith chose a slimmer countertop profile and a textured round mirror, which also serves as a focal point for anyone entering the room.



“All the colors of the sea look sophisticated because they are nuanced and layered.”

—JESSICA RISKO SMITH,  
INTERIOR DESIGNER



a continuous line to define the space. “This way we could mix two bold patterns going all-out while still getting a calm, serene environment,” Smith says.

To ensure serenity and give the eye plenty of resting points, Smith kept everything else neutral. White subway tile clads the shower, and a gray marble shower bench turns into a shelf alongside the bathtub, providing a spot for candles or glasses. Warm tones come in through custom cabinetry, a petrified-wood side table, and a soft gray vanity seat upholstered in steam-friendly indoor-outdoor fabric.

Smith says the elements exemplify her “rule of three.” A successful design, she says, has three things: pattern, white, and warmth. The challenge is to use restraint so as not to overaccessorize and upset the balance—much as in fashion. “It’s like the belt, handbag, and shoes,” she says. “Don’t do one more thing!”

Resources begin on page 108.

## DESIGNER INSIGHTS: PATTERN PLAY

Interior designer Jessica Risko Smith offers tips on how to masterfully mix patterns.

- *Go big and bold.* Choose two big patterns and go all-out with each on a whole surface, be it a wall or floor, rather than using smaller pieces here or there, which looks and feels chopped up.
- *Choose complementary colors.* Using tiles from one vendor can help you stay within the same color family while selecting different hues in the same palette.
- *Add neutrals.* Whites, woods, and texture all offer a break in pattern and color and let the eye rest, which is critical for counteracting a bold statement and letting it shine.